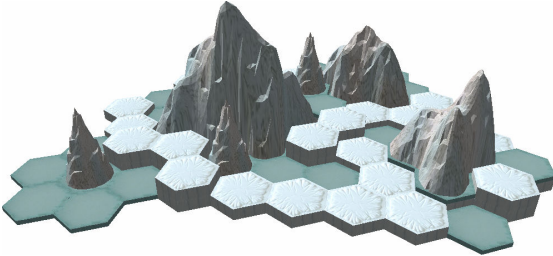




ALIASQTIP'S EXCLUSIVE BATTLEFIELDS



ICEBERG BATTLEFIELD

Required Sets: Thaelenk Tundra

Floating adrift in the Dragon Head Sea looms a massive chunk of glacial ice. There is no escape from this frozen island until the enemy is conquered.

MASTER GAME – Ice Breaker

(2 players)

While battling on an ice-flow in the Thaelenk Tundra, a large iceberg breaks away but the fighting continues unabated.

Goal: Destroy all of your opponents' figures.

Setup: Each player drafts or brings pre-made 250-point armies.

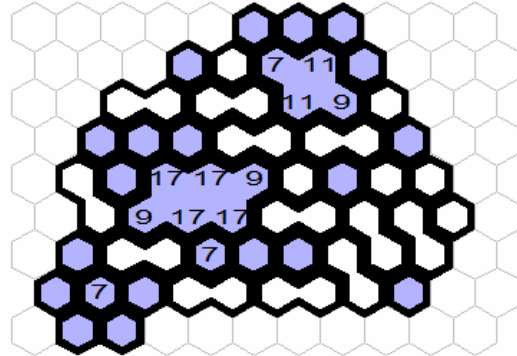
One player starts in the red starting zone; the other player starts in the blue starting zone.

Special Rules: Treat all Snow Tiles as Normal Snow and treat all Ice Tiles as Slippery Ice.

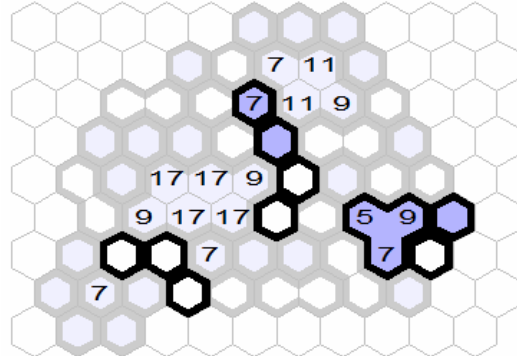
Victory: When the other side has no figures left on the battlefield, you win. If the battle reaches the end of Round 10, then the game is over and the player with the most points on the battlefield wins.



Level : 1



Level : 2



Start

