

#### SETUP:

- Orange Dots are Car Objects
- Green Dots represent the interior of the Bungalows and the Purple dots the Entryways
- Yellow Dots are the Medium Size 3 Objects (Mailboxes, Trash Cans, etc.)
- Cyan Dots are the Satellite Dish DOs
- Map uses 1 First Aid item and 3 Coffee Items: Coffee Cup, Espresso Shot, and Coffee Carafe. They are placed randomly, 1 in the center of each house.

#### SPECIAL RULES:

All Trees are Large Destructible Objects and have the Tree and Nature Keywords. All Cars and Satellite Dishes are Large Destructible Objects. Trash Cans and Mailboxes are Medium Destructible Objects and have the Inorganic and Urban keyword.



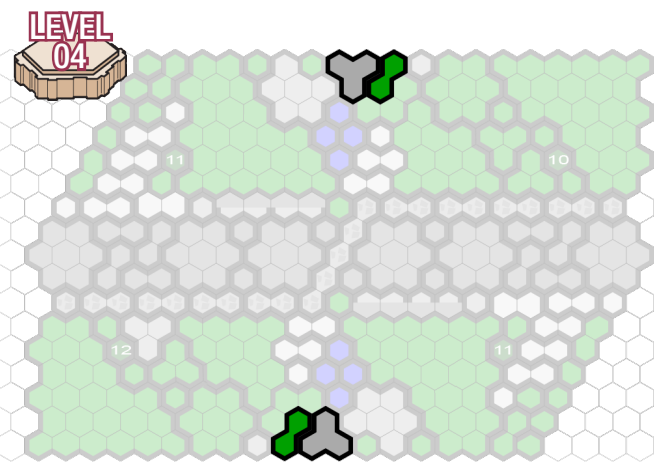
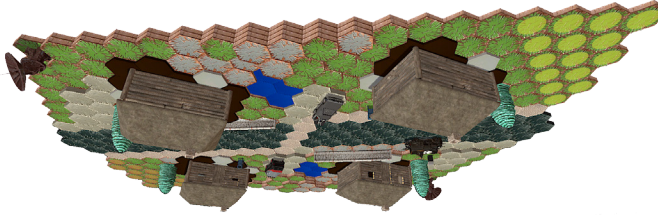
#### Required Sets:

Rise of the Valkyrie™ Master Set,  
Road to the Forgotten Forest™,  
Marvel The Conflict Begins™ Master Set x2  
Destructible Objects: 4 Bungalows, 4 Cars, 4 Large Single-Base Trees, 2 Medium Size 3 Trash Cans, 2 Medium Size 3 Mailboxes, 2 Satellite Dishes  
Standard Tiles: Asphalt 7x6, 2x10, 1x6, Concrete 7x2, 2x12, 1x7, Grass 24x6, 7x4, 3x5, 2x21, 1x18, Road 5x2, 2x8, 1x2, Rock 24x2, 7x3, 3x3, 2x3, 1x6, Sand 7x1, 3x2, 2x2, 1x3, Water 1x8  
“It’s a beautiful day in the neighborhood.”

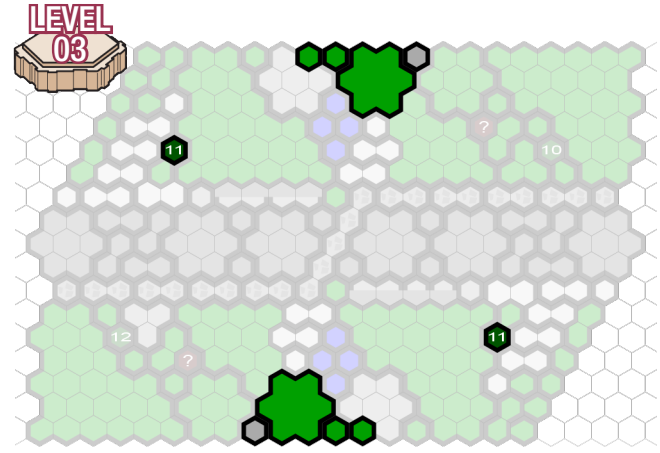
## Your Friendly Neighborhood



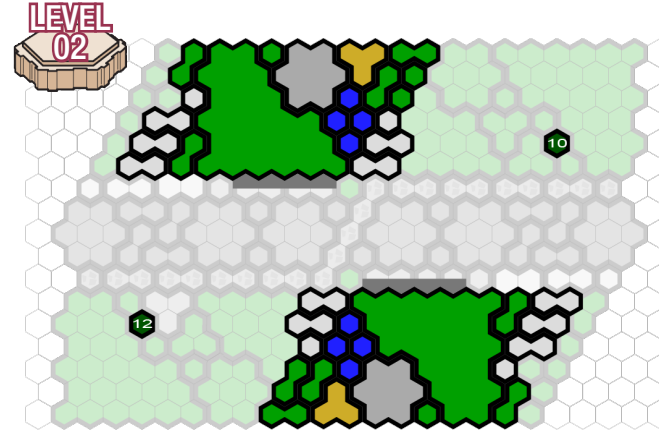
Map size is 40.5 inches x 28.5 inches



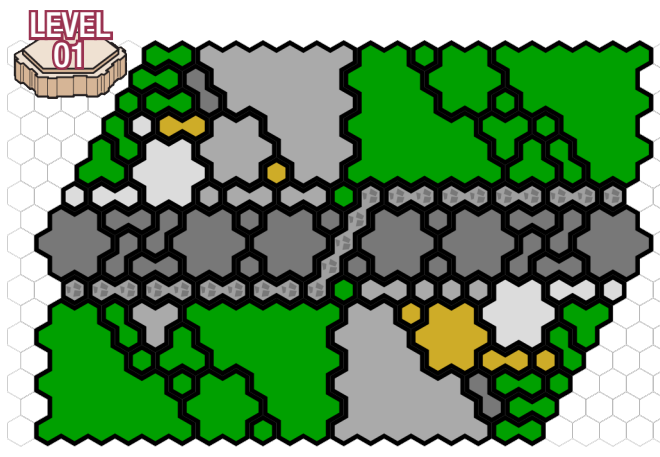
LEVEL  
04



LEVEL  
03



LEVEL  
02



LEVEL  
01