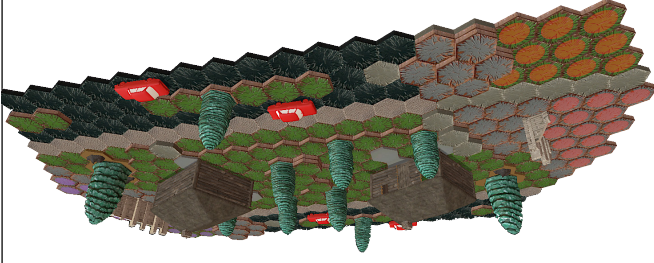


Map size! 41 inches x 24 inches



Elm Street



Required Sets:

- Rise of the Valkyrie™ Master Set,
- Road to the Forgotten Forest™ x2,
- Marvel The Conflict Begins™ Master Set x2
- Destructible Objects:** 8 Large Evergreen Trees, 2 Giant Evergreen Trees and 4 Large Cars
- Special Tiles:** 2 Bungalow Houses
- Standard Tiles:** Asphalt 7x6, 2x12, 1x6, Concrete 7x6, 2x10, 1x6, Grass 24x6, 7x5, 3x5, 2x19, 1x20, Road 5x2, 2x16, 1x4, Rock 24x2, 7x2, 3x2, 2x2, 1x6, Sand 3x2, 1x2

“Bio: One, two, Freddy’s coming for you.
 Three, four, better lock your door.
 Five, six, grab your crucifix.
 Seven, eight, gonna stay up late.
 Nine, ten, never sleep again. - A Nightmare on Elm Street.”

SETUP:

Use the cards for the Great Evergreen Trees and use the Interior Fighting Rules for inside the Bungalow.

SPECIAL RULES:

- All Trees are Large Destructible Objects and have the Nature and Tree keywords.
- All Cars are Large Destructible Objects and have the Inorganic and Urban keywords.

