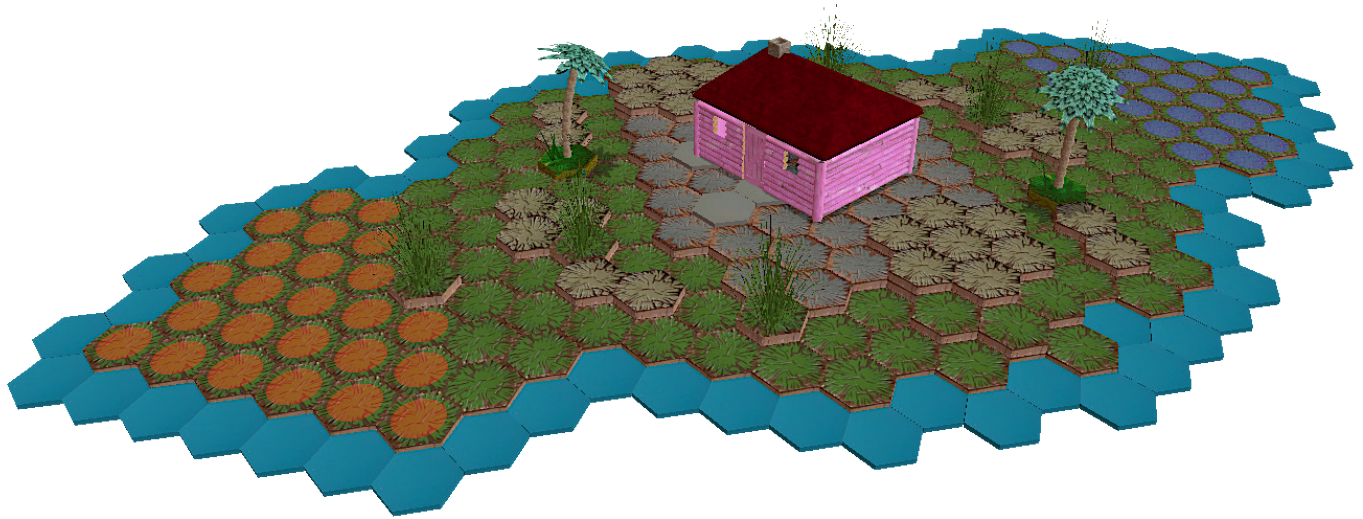




SUPER SCAPE

Kame House is a house on a very small island in the middle of the sea, where Master Roshi lives and trains his students. Kame House is known for its distinctive pink color, red roof, and the words "Kame House" painted above the entrance.

Battlefield: Kame House



Required Sets:

Rise of the Valkyrie™ Master Sets x1, Ticalla™ Jungle Expansion Set x1, Bungalow x1, Water Mat x1 (or 68 water tiles, so 47 extra water tiles)

Terrain Count:

Destructible Objects: N/A

Objects: Bungalow x1, Jungle Bush x6, Jungle Tree x2

Mats: Water Mat x1 (or 68 water tiles)

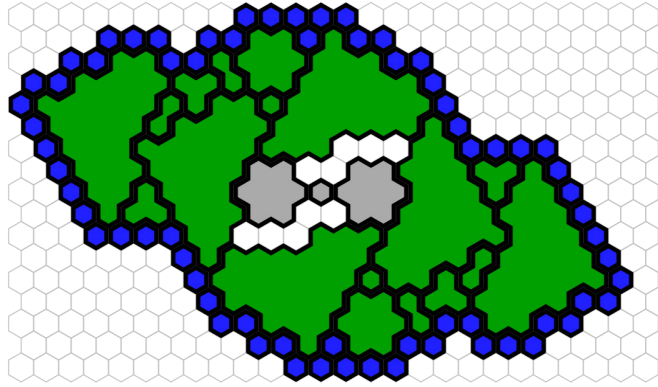
Special Tiles: N/A

Standard Tiles: Grass 24x6, 7x2, 3x4, 2x6, 1x4, Rock 24x2, 7x2, 1x4, Sand 7x2, 3x2, 2x2, 1x4

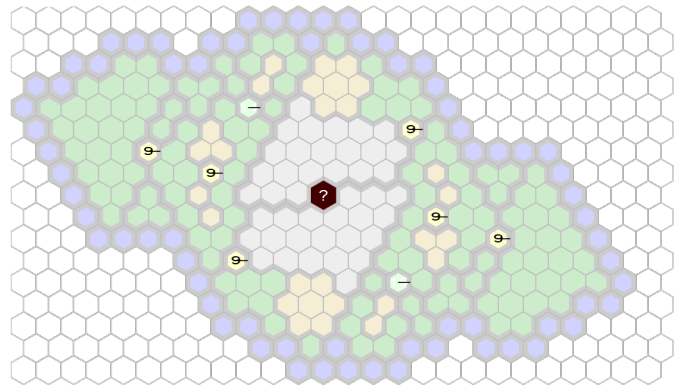
Map size is 46 inches x 26 inches (or 36x36)



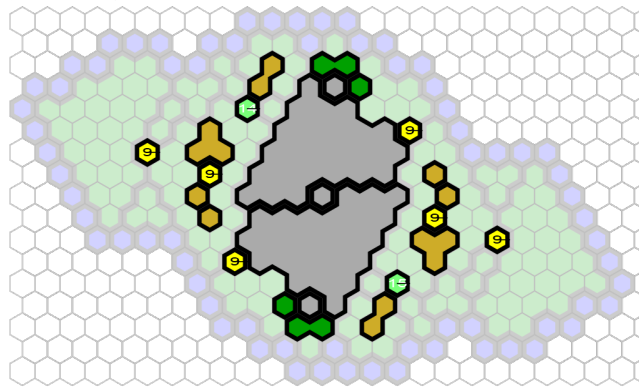
LEVEL 01



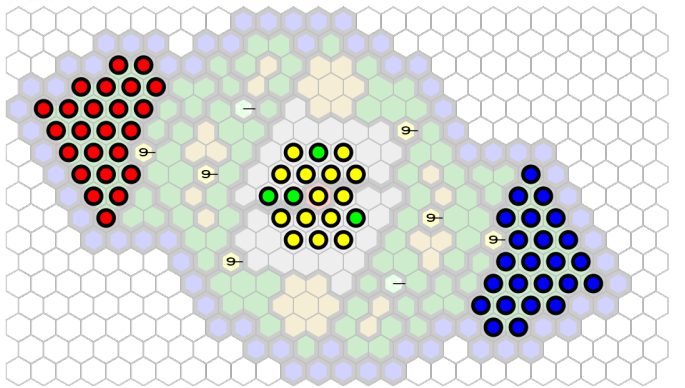
LEVEL 04



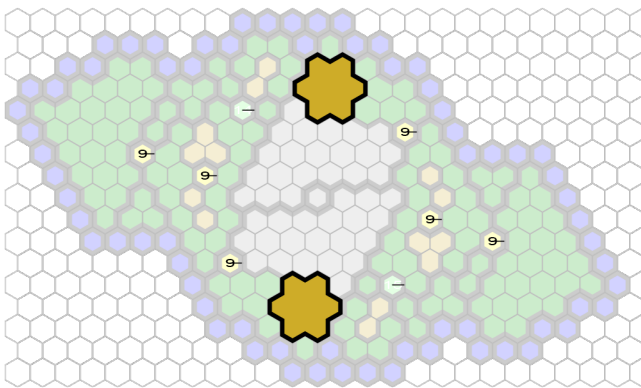
LEVEL 02



START ZONES



LEVEL 03



Special:
Yellow Dots = Bungalow
Green Dots = Bugalow doors

Start the game with 1x Command Hub resource token on the center spot within the Bungalow

Battlefield: Kame House